

## PREVENTION OF ROAD TRANSPORT INCIDENTS BETWEEN TRUCKS AND LIGHT VEHICLES IN THE INVISIBLE ZONE

**Hamroqulov Rasuljon Madraimovich**

(Tashkent state transport university *senior teacher*)

**Abdusamatova Mashxura Abdixamit qizi**

(*Teacher of Vocational school of Sergeli district, Tashkent city*)

**Egamberganova Umida Sobir qizi**

(*Teacher of Vocational school of Sergeli district, Tashkent city*)

**Abstract:** *In this article, invisible areas are identified as dangerous areas where collisions with light and truck vehicles may occur.*

**Key words:** *invisible area, car, road traffic accident.*

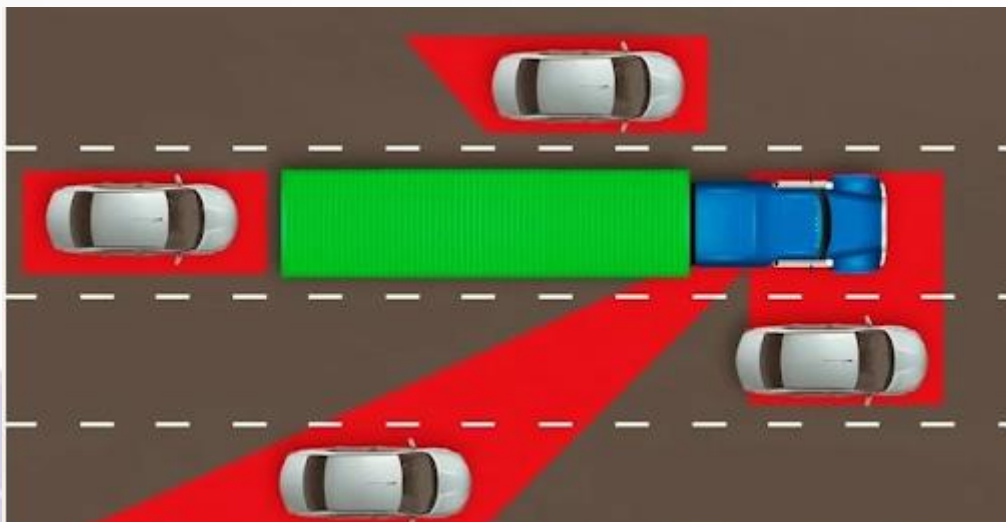
The invisible area is the invisible areas that the driver cannot control during the movement of the car. Even if the car is equipped with exterior mirrors and windshields, they cannot be completely trusted. From them, they cannot find out the full information about what is happening behind the car, they can only get a general idea. Even in cars with cameras, visibility is more or less limited.

Due to the large size of trucks and buses, dead spots cannot be controlled in this way. Therefore, if you are driving a large vehicle, do not make maneuvers without observing the invisible boundaries, if you do, you will definitely get into a traffic accident.

Figure 1 shows a few places that look bad on a truck.

The bigger the car, the harder it is for the driver. The number and size of blind zones depends on:

- \* cabin height;
- \* trailer length, width;
- \* number and location of mirrors;
- \* the structure of the car.



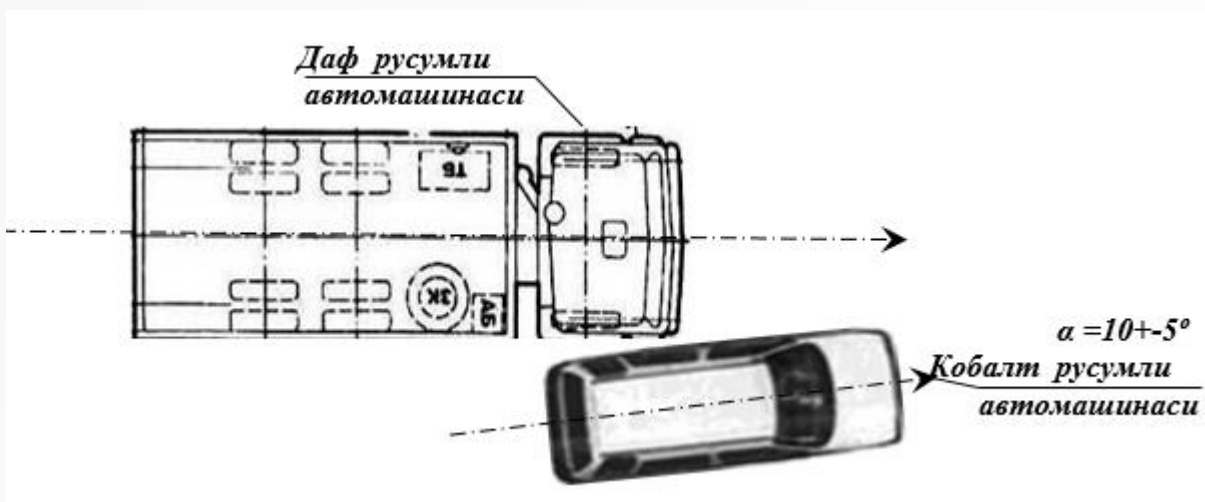
**Figure 1. The invisible border of the truck**

Try to cover as much of these invisible boundaries as possible with your rear view mirrors when turning and re-aligning. For example, you should turn left at a T-shaped intersection. To make the maneuver as safe as possible, the car should be directed at a right angle to the intersection. Car drivers in such cases turn in advance, as if directing the car to the next stream. If you do this in a truck, the right side of the intersection will be an invisible border. This applies even to small trucks. The visibility in the cabin will be very limited.

Passenger car owners know how difficult it is to follow large vehicles on the highway. Overtaking and other maneuvers near trucks are dangerous. The truck has invisible boundaries that are closed to view. These parts of the highway are not visible to the truck driver. To avoid a traffic accident, you need to know where the invisible boundaries are. Road users are advised not to enter invisible boundaries.

For example, in a collision with Kobalt and Daf cars, the rear wing, rear left door and rear bumper of the Kobalt car were damaged, and the front bumper, right front lights and door trim of the Daf car were damaged.

As a result of comparing the models of the cars, taking into account the corresponding tracks and injuries, their location, their position relative to each other at the time of the collision was determined. Accordingly, at the beginning of the collision, it can be said that the front right corner of the Daf car hit the rear left door of the Kobalt car, and at that time the angle between their longitudinal axes was around  $10 \pm 5$  degrees.



**Figure 2. These conditions of cars are not taken in relation to the elements of the road, and their models are presented in the drawing**

So, at the time of the collision, the front right corner of the Daf car hit the back left door of the Kobalt car, and at that time the angle between their longitudinal axes was about  $10 \pm 5$  degrees.

From the above studies, it was shown that the front right corner of the Daf car at the beginning of the collision hit the rear left door of the Cobalt car, and at that time the angle between their longitudinal axes was about  $10 \pm 5$  degrees.

Daf and Kobalt cars were in motion, dents and bending marks on the cars, Kobalt car hit the rear left door and the direction of impact forces at that time, the following conditions of the cars after the road traffic accident and collision mechanisms considering; A Cobalt has changed its direction of travel from right to left, indicating that this Cobalt has changed its direction of travel.

So, we can conclude from the above studies that in this case, the Kobalt car changed the direction of movement. You have to be careful, even if you have to pass a truck. You cannot overtake on the right. The reason is that trucks can push a car off the road, and the right side of trucks is the most dangerous.

In order to avoid traffic accidents in the "invisible area", it is recommended to follow the following general rules:

- do not always ignore sudden turns and signals of other drivers;
- timely warn other road users about maneuvers with turn signals;
- be careful when rearranging, remember that each road user has an "invisible area";
- take some time and adjust your car's side windows for maximum visibility.